

**NOTE:**  
**GENERAL CONSTRUCTION TOLERANCE:** ± 5 mm [± 0.2"]  
**INSTALLATION REQUIREMENT**  
**SPACE FOR MAINTENANCE ABOVE TOP OF THE CABIN ON THE INTERNAL SIDE:**  
 \*MIN. 300 mm [11.81"]  
 \*RECOMMENDED 750 mm [29.53"]  
 \*if space does not meet the required specifications contact us to discuss alternatives

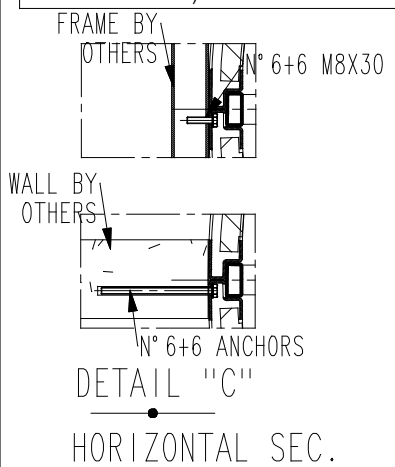
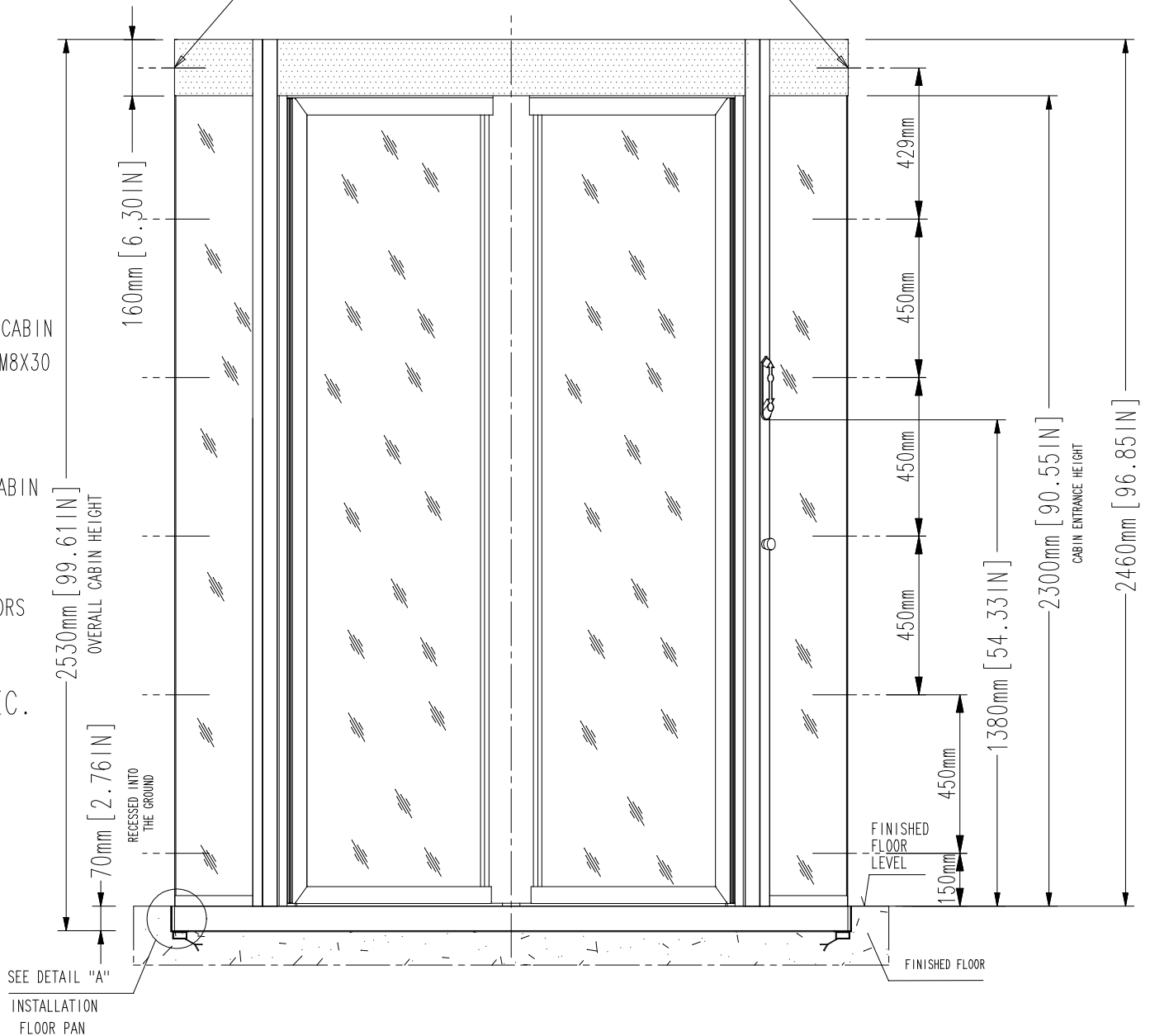
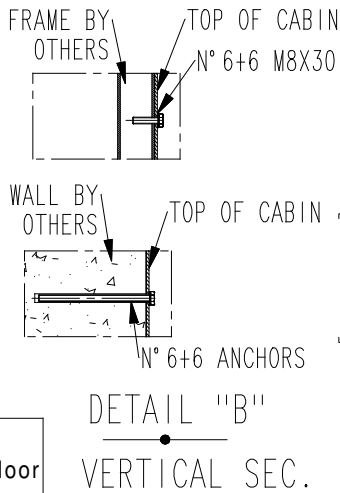
**FIXING TO THE WALL/FRAME:**  
 the portal must be vertically fixed to the existing wall with 6+6 anchors, 6 anchors on the left and 6 anchors on the right side of the portal (front view). However, if there is a frame, the portal must be fixed with 6+6 screws, 6 screws on the left and 6 screws on the right side of the portal (front view).  
**FIXING TO THE FLOOR:**  
 the portal must be fixed, with 8+8 screws by using the 8+8 existing holes, as indicated in the drawing (top view).

**NOTE:**  
 - unit must be installed on to a level floor (suggested flatness tolerance: ±1 mm)  
 coating option:  
 -4mm in addition to size (overall dimensions)  
 -4mm in subtraction to size (cabin entrance width)

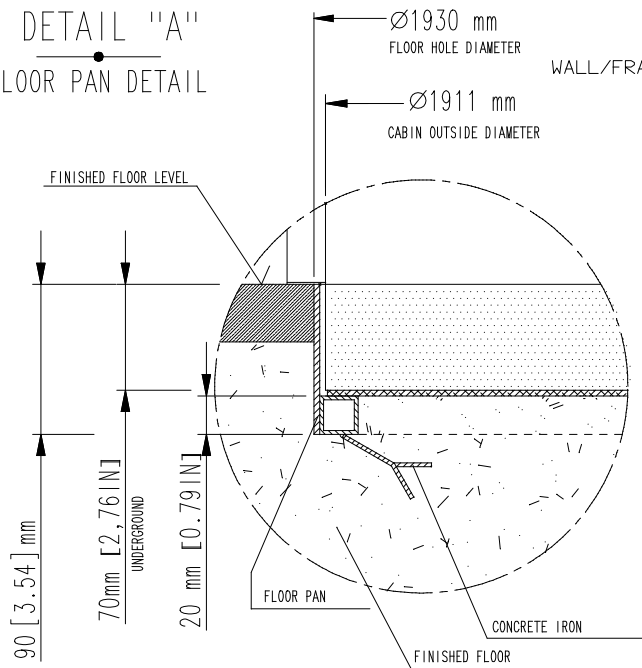
FRONTAL VIEW  
 NON SECURE SIDE

FIXING HOLES TO THE WALL/FRAME  
 DETAIL "B"

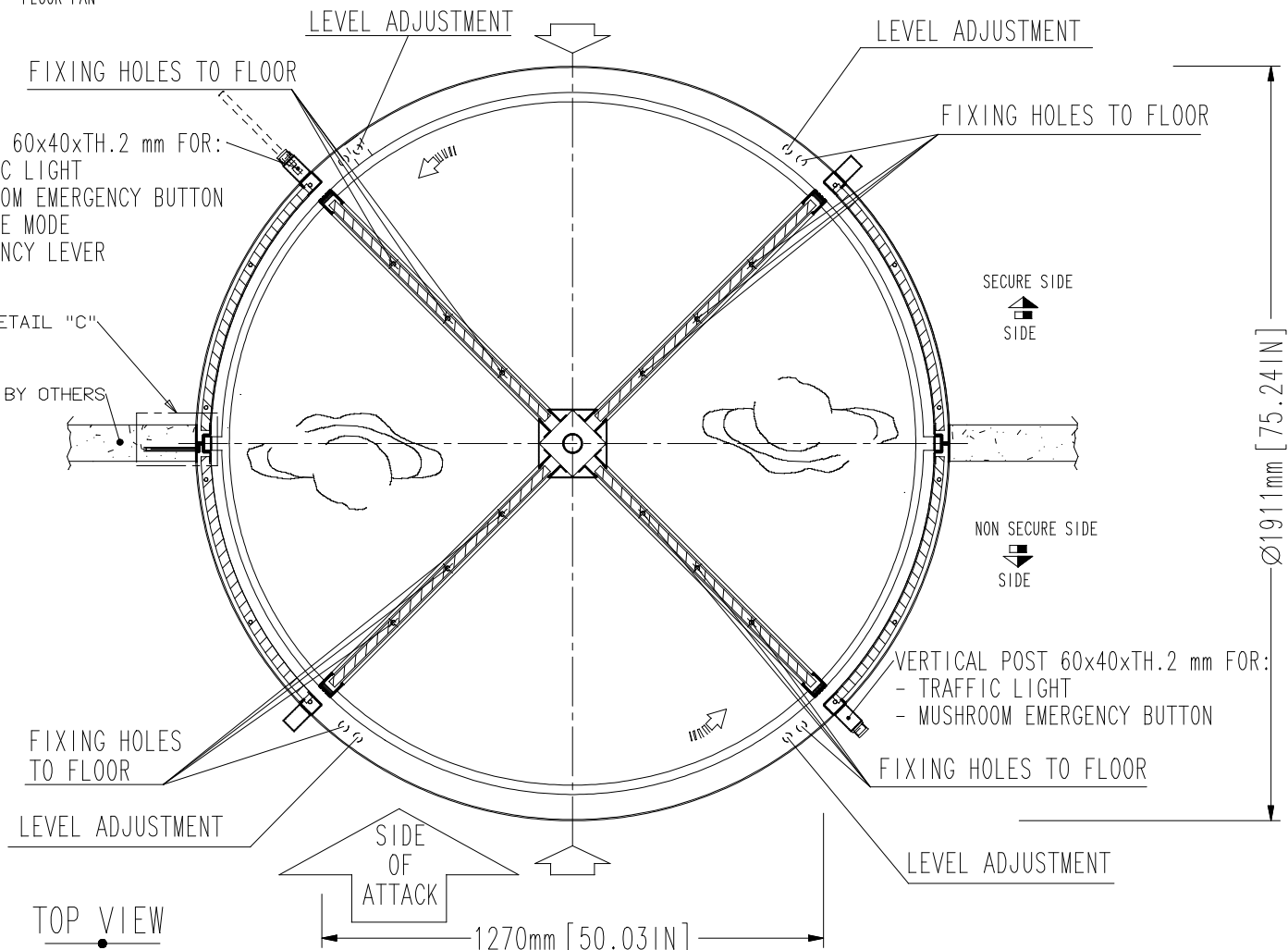
FIXING HOLES TO THE WALL/FRAME



DETAIL "A"  
 FLOOR PAN DETAIL



VERTICAL POST 60x40xTH.2 mm FOR:  
 - TRAFFIC LIGHT  
 - MUSHROOM EMERGENCY BUTTON  
 - SERVICE MODE  
 - EMERGENCY LEVER



1	05/02/2024	ADDED FIXING DETAILS	ISABELLA
REV	DATE	REVISION DESCRIPTION	DRAWN BY
DRAWN BY: ALESSANDROR		DESIGNED AND MANUFACTURED BY: <b>aalluser</b> INDUSTRIE designed for your security	DISTRIBUTED BY:
DATE: 12/09/2023		TITLE/DESCRIPTION REV190 HUC=X A1(S1)-B3(S2)-C5(S3)+ NO. 4 VERTICAL POSTS: OVERALL DIM.	<i>Cabin recessed into the floor (ramp or floor pan required)</i> <i>Overall dimensions and mechanical installation requirement</i>
DRAWING NUMBER: EARC678			
REVISION: 1			
SCALE: 1:25			
PAGE 1 OF 1			

THIS DOCUMENT IS AN ALLUSER INDUSTRIE PROPERTY AND IT CANNOT BE COPIED OR TRANSFERRED TO THIRD PARTIES WITHOUT A PREVIOUS WRITTEN AUTHORIZATION. DUE TO OUR POLICY OF CONTINUOUS PRODUCT DEVELOPMENT, ALL DIMENSIONS AND SPECIFICATIONS DESCRIBED IN THIS DOCUMENT ARE SUBJECT TO CHANGE WITHOUT NOTICE.