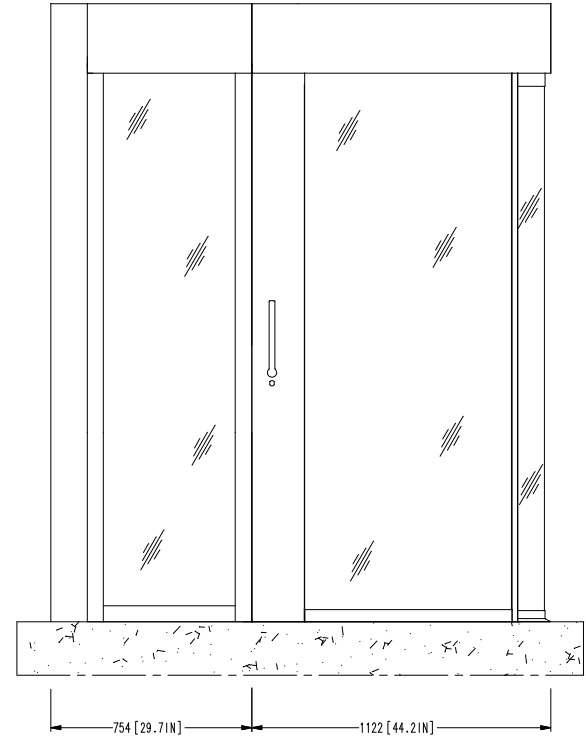
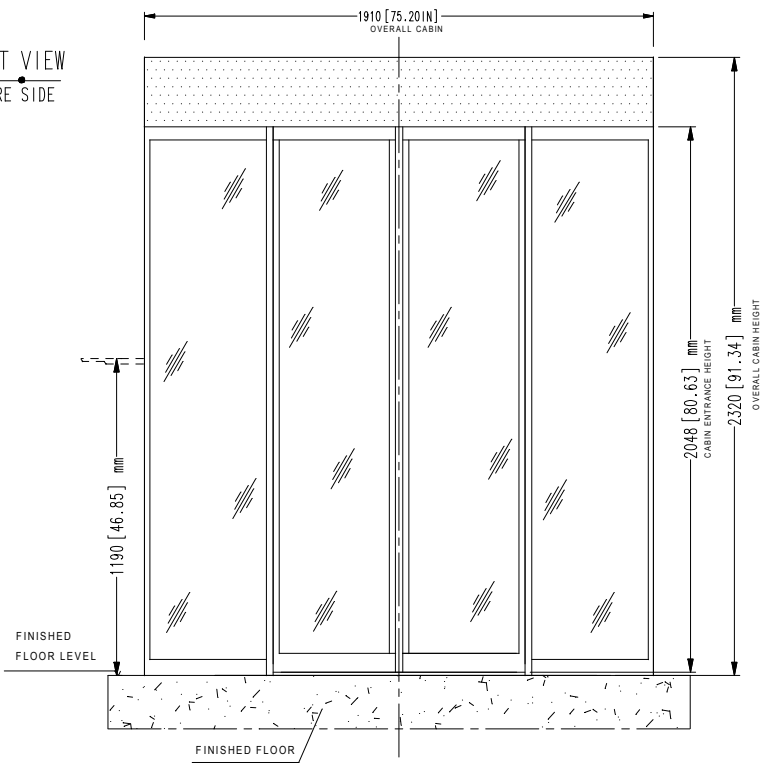
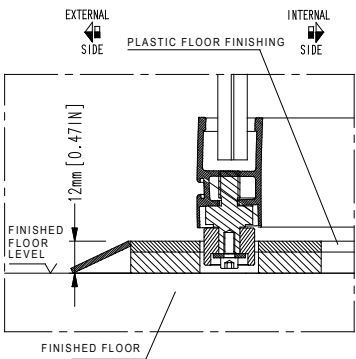


**NOTE:**  
 GENERAL CONSTRUCTION TOLERANCE: ± 5 mm [± 0.2"]  
 INSTALLATION REQUIREMENT  
 SPACE FOR MAINTENANCE ABOVE TOP OF THE CABIN ON THE INTERNAL SIDE:  
 \*MIN. 300 mm [11.81"]  
 \*RECOMMENDED 750 mm [29.53"]  
 \*if space does not meet the required specifications contact us to discuss alternatives

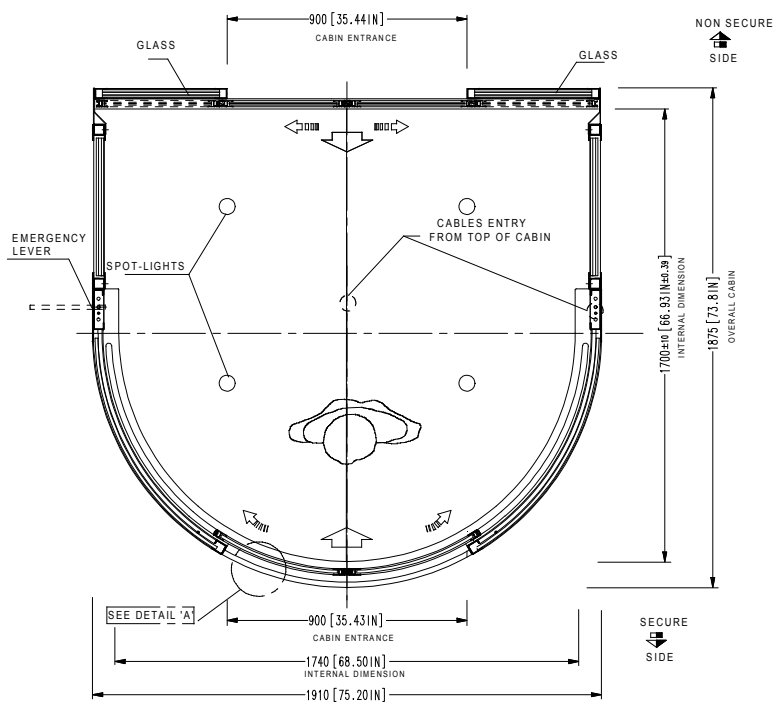
FRONT VIEW  
 SECURE SIDE



DETAIL 'A'



**NOTE:**  
 - unit must be installed on to a level floor (suggested flatness tolerance: ± 1 mm)  
 - coating option: 2 mm thickness in addition to size



2	30/06/2017	UPDATED FONT	L.BERTAZZO
1	09/06/2017	DETAIL A: BASE = 12 MM	L.BERTAZZO
REV	DATE	REVISION DESCRIPTION	DRAWN BY
DRAWN BY: ISABELLA		DESIGNED AND MANUFACTURED BY: <b>aalluser</b> INDUSTRIE designed for your security	DISTRIBUTED BY:
DATE: 19/05/2016		TITLE/DESCRIPTION <b>FPJ 190-2S MY16/EXT = 700 MM</b>	<i>Flush mounted to floor (no recess required)</i> <i>Overall dimensions and mechanical installation requirement</i>
DRAWING NUMBER: EARC353			
REVISION: 2		PAGE 1 OF 1	
SCALE: 1:20		THIS DOCUMENT IS AN ALLUSER INDUSTRIE PROPERTY AND IT CANNOT BE COPIED OR TRANSFERRED TO THIRD PARTIES WITHOUT A PREVIOUS WRITTEN AUTHORIZATION. DUE TO OUR POLICY OF CONTINUOUS PRODUCT DEVELOPMENT, ALL DIMENSIONS AND SPECIFICATIONS DESCRIBED IN THIS DOCUMENT ARE SUBJECT TO CHANGE WITHOUT NOTICE.	