

NOTE:
CONSTRUCTION TOLERANCES:

+ 10 mm OVERALL FOR WIDTH

+50 mm HEIGHT

INSTALLATION REQUIREMENT

SPACE FOR MAINTENANCE
ABOVE TOP OF THE CABIN ON
THE INTERNAL SIDE:

*MIN. 300 mm [11.81"]

*RECOMMENDED 750 mm [29.53"]

*if space does not meet the required
specifications

contact us to discuss alternatives

*unit must be fixed into suitable frame
and finished by others

FRONT VIEW

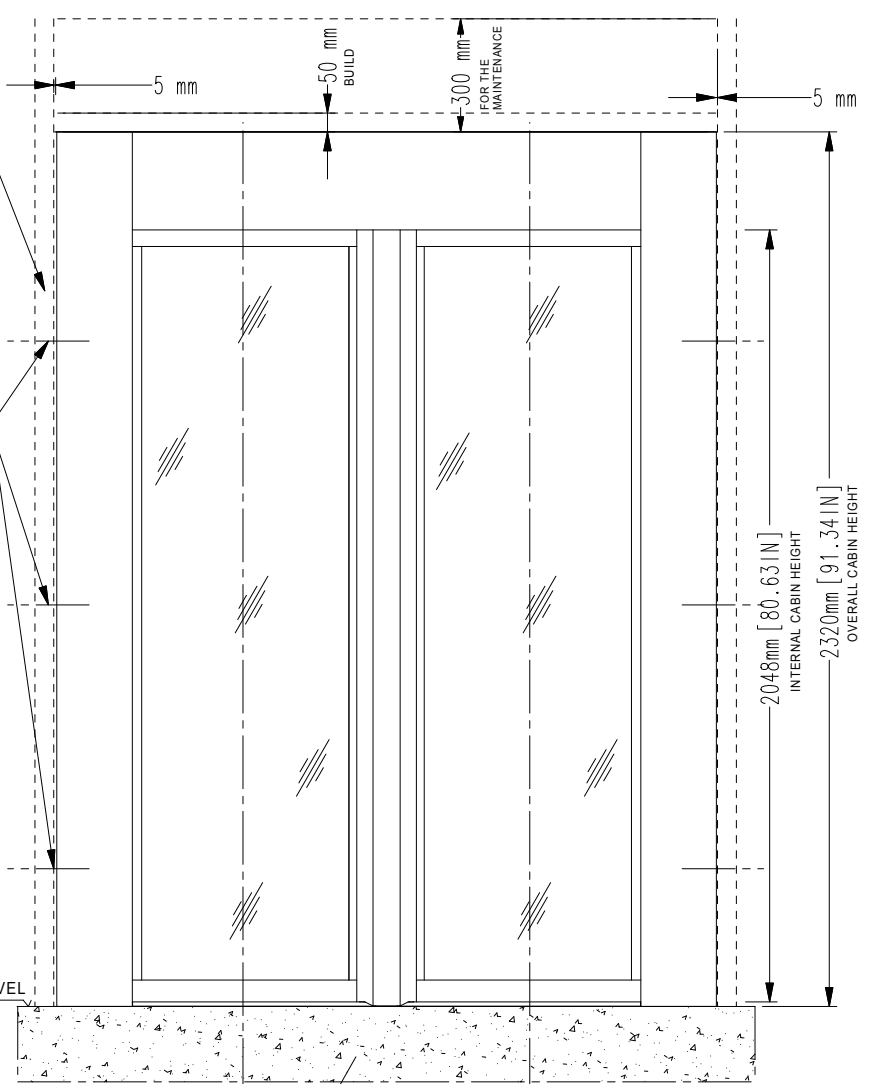
NON SECURE SIDE

FRAME FOR FIXING
BY OTHERS

FIXINGS

2060mm [81.10 IN]

FINISHED
FLOOR LEVEL

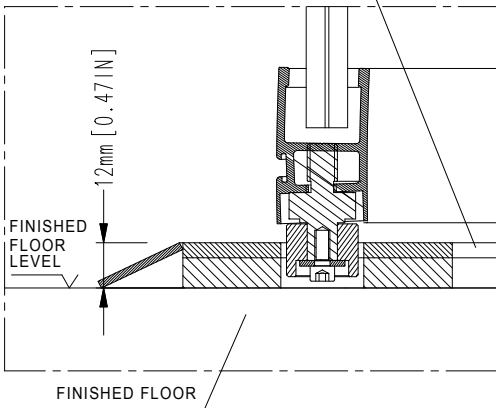


DETAIL 'A'

EXTERNAL
SIDE

PLASTIC FLOOR FINISHING

INTERNAL
SIDE



NOTE:
- unit must be installed on to a level floor
(suggested flatness tolerance: ± 1 mm)

- coating option: 2 mm thickness in
addition to size

TOP VIEW

SECURE
SIDE

NON SECURE
SIDE

NON SECURE

SEE DETAIL 'A'

LEVEL AND FIXING

LEVEL AND FIXING

FINISHED FLOOR

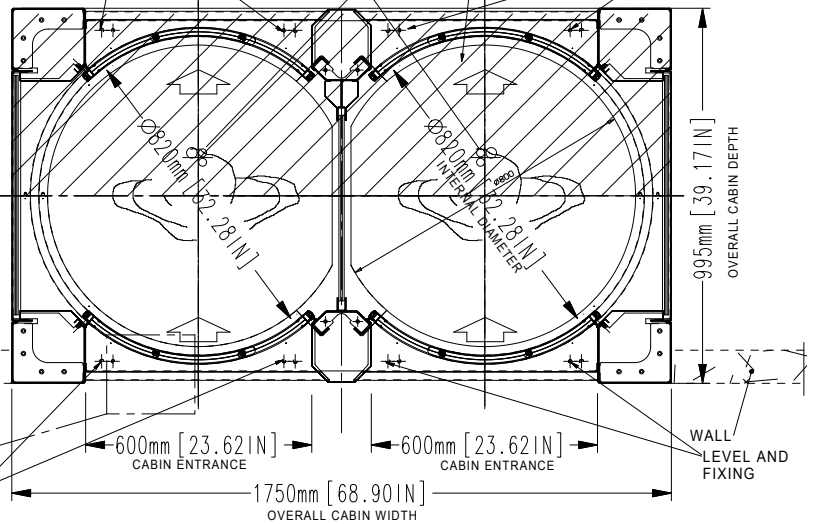
CABLES ENTRY
FROM TOP OF CABIN

2 CABLE CONDUITS $\varnothing 1"$

1 CABLES CONDUIT $\varnothing 1"1/4$

MAINTENANCE
ABOVE 300 mm

LEVEL AND FIXING



4	08/05/2018	UPDATED TOP VIEW	L.BERTAZZO
3	30/06/2017	UPDATED FONT	L.BERTAZZO
REV	DATE	REVISION DESCRIPTION	DRAWN BY
DRAWN BY: ISABELLA		DESIGNED AND MANUFACTURED BY: alluser INDUSTRIE designed for your security	DISTRIBUTED BY:
DATE: 09/12/2015			
DRAWING NUMBER: EARC320			
REVISION: 4	TITLE/DESCRIPTION		<i>Flush mounted to floor (no recess required)</i> <i>Overall dimensions and mechanical installation requirement</i>
SCALE: 1:20	E4R-E4KR MY16/FIXING/SPACE FOR MAINTENANCE		
PAGE 1 OF 1			

THIS DOCUMENT IS AN ALLUSER INDUSTRIE PROPERTY AND IT CANNOT BE COPIED OR TRANSFERRED TO THIRD PARTIES WITHOUT A PREVIOUS WRITTEN AUTHORIZATION.
DUE TO OUR POLICY OF CONTINUOUS PRODUCT DEVELOPMENT, ALL DIMENSIONS AND SPECIFICATIONS DESCRIBED IN THIS DOCUMENT ARE SUBJECT TO CHANGE WITHOUT NOTICE.